

LEGO.com/apps

1086 pcs/Т/рз/рзс/речас/块/elementy/ks/db/buc/части/det/osa/dalys

Warning! Small parts. • Achtung! Kleine Teile. • Attention ! Petits éléments. • Avvertenza! Piccole parti. • Waarschuwing! Kleine onderdelen. • Advertencia! Partes pequeñas. • Advarsel! Små dele. • Váróvilág! Little hlutir. • Varoitus! Pieniä osia. • Varning! Små delar. • Advarsel! Små deler. • Atenção! Pequenas partes. • Προειδοποίηση! Μικρά μέρη. • 警告! 小部品があります。 • 警告! 当心小物件。 • 경고! 작은 부품 포함. • Внимание! Мелкие детали. • Ostrzeżenia! Małe części. • Upozornění! Malé části. • Попередження! Дрібні деталі. • Urozorenje! Sitni dijelovi. • Упозорење! Мали делови. • Предупреждение! Мали делови. • Opozorilo! Majhni deli. • Avertisment! Părți mici. • Внимание! Малки части. • Brīdinājums! Sīkas detaļas. • Noiatus! Väikesed osad. • Įspėjimas! Smulkios detalės. • Uyarı! Küçük Parçalar. • تحذیر! أجزاء صغيرة.

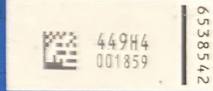


MIX Packaging | Supporting responsible forestry FSC® C117818

Components made in DENMARK, MEXICO, HUNGARY, CHINA, VIETNAM and the CZECH REPUBLIC. Manufactured by the LEGO Group, DK-7190 Billund, Denmark. Imported in the UK by LEGO Company Ltd., 33 Bath Road, Slough SL1 3UF, UK. Imported in Malaysia by LEGO Trading Sdn. Bhd., Suite 8.02, No.4 Jln PJU 9/8A, 47820 Petaling Jaya, Malaysia. Imported in Hong Kong by LEGO Hong Kong Ltd., Units 1610-11, 16/F, Mira Place Tower A, 132 Nathan Road, Tsim Sha Tsui, Kowloon, Hong Kong.

LEGO, the LEGO logo and the Minifigure are trademarks of the LEGO Group. ©2025 The LEGO Group.

The F1 logo, FORMULA 1, F1, GRAND PRIX and related marks are trademarks of Formula One Licensing BV, a Formula 1 company. All other trade marks, logos and copyrights, including those of the teams featured, are the property of their respective owners. All rights reserved. OFFICIAL LICENSEE OF FORMULA 1®



LEGO.com/service

Item: 6526272



118789-445-10517211